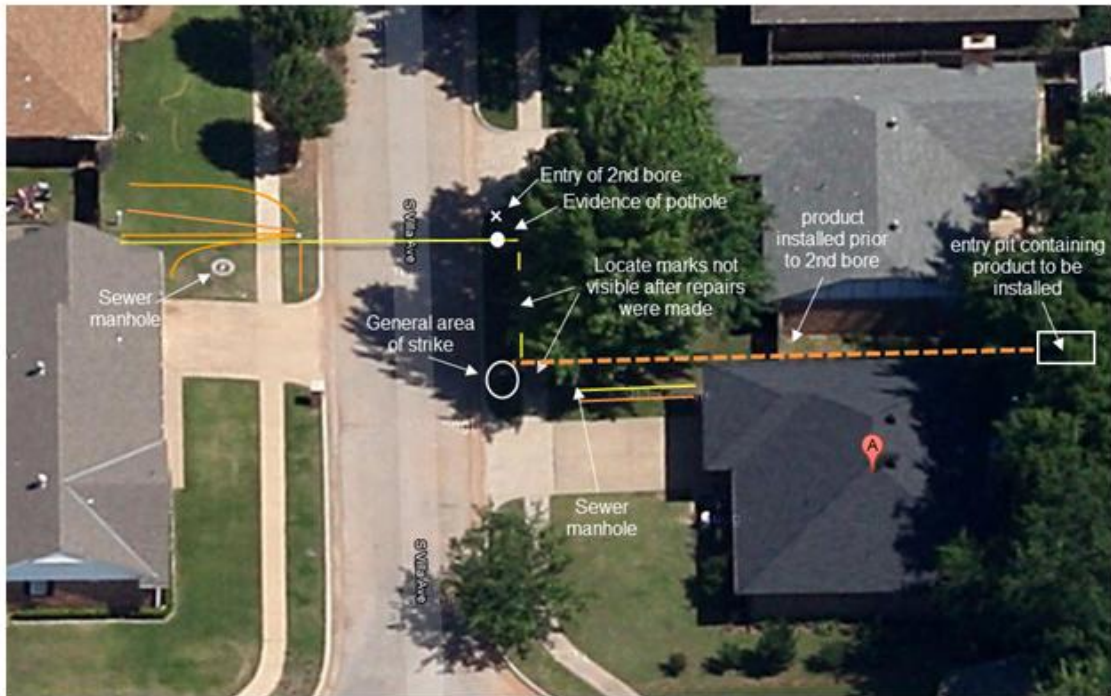


Jan 2013- Oklahoma City

Minor injuries - One home destroyed, many others damaged

No basement, no sewer line breach found

Sub-contractor installing telecom lines parallel to gas line



Aerial view of area prior to explosion obtained from Google Earth and revised with site information.

— marked phone/cable line — marked natural gas line
- - - phone line installed by contractor prior to 2nd bore





Feb 2013 -- Detroit

One death -- Two or three homes destroyed, many others damaged

Basement, no sewer line breach (sewer lines in the alley)

Gas company crossing service lines with new main, report states that service lines at crossings were not exposed





FILED UNDER - Local News / Oakland County | 2:58 AM, Apr. 9, 2013 | 0 Comments

 Tweet { 1 }

$$g+1 \leftarrow 0$$

Key Step
called potholing was left out.

1 GETTING STARTED: A guided boring machine pushes a spinning drill bit into the ground, starting a path for a new gas pipe.

2. GUIDING THE BORE
The drill head sends positioning signals to workers at the surface who guide the drill around obstacles.

3. MISSING STEP
Hand digging where the bore passes underground lines, known as potholing, is required in order to allow crews to see that their rotating drill bit is passing safely. This was not done properly on Cooper Avenue on Feb. 27, according to Consumers Energy officials.

4. DAMAGED PIPE
A steel natural gas service line at 4232 Cooper Ave. was damaged, causing gas to migrate into the nearby home and leading to an explosion that killed its owner.

5:07 P.M. The house at 4232 Cooper Ave. exploded, killing Małczynski and damaging dozens of homes.

5:15 P.M. A Consumers Energy manager arrived on the scene after feeling the Royal Oak Service Center shake. The gas service worker dispatched to check out the gas leak arrived at 529 p.m.

SOURCES: Consumers Energy; Michigan Public Service Commission

DAVID PIERCE/DETROIT FREE PRESS

5:15 P.M. A Consumers Energy manager arrived on the scene after feeling the Royal Oak Service Center shake. The gas service worker dispatched to check out the gas leak arrived at 5:29 p.m.

DAVID PIERCE/DETROIT FREE PRESS

Feb 2013 -- Kansas City

One death, multiple serious injuries -- Business destroyed, many buildings damaged

Basement unknown, sewer lines unknown

Contractor installing telecom line across gas line, according to official report the contractor assumed locates were off when they found two lines together that had been marked as one.



Mar 2013 -- Grand Junction, CO

At least 3 people injured – 2 homes destroyed

Sub-contractor reportedly struck a gas line that was beneath a located gas line determined to be abandoned

<http://www.gisentinel.com/news/articles/report-junction-8232shares-no-blame-8232in-gas-exp>

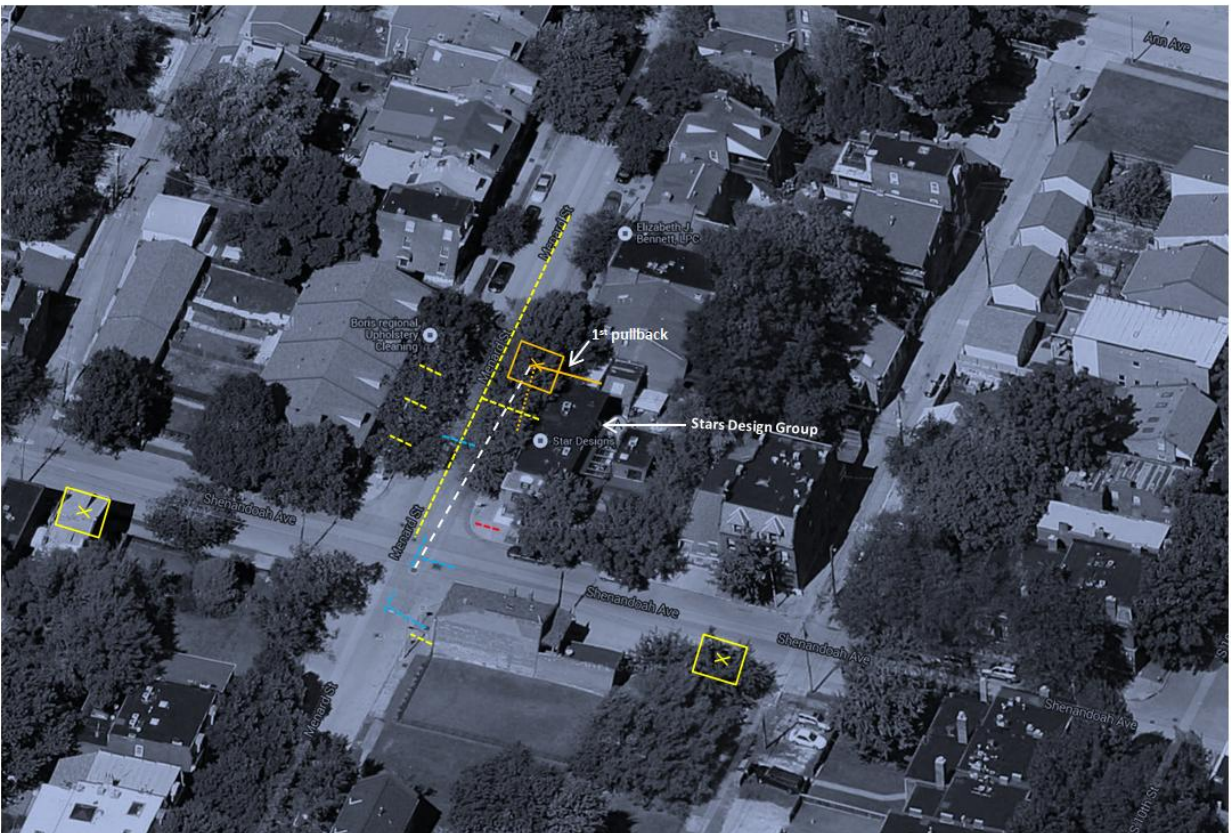
<http://www.gisentinel.com/news/articles/gas-explosion-levels-2-homes>

Feb 2014 -- St Louis, MO

No injuries (14 people evacuated less than 1 min prior to explosion) -- Building destroyed

Sub-contractor installing telecom lines, crossed a gas service line, snow on the ground covered locates





Mar 2014 -- Ewing, NJ

1 death, multiple injuries -- Building complex destroyed

Details unknown

http://www.nj.com/mercer/index.ssf/2014/03/crews_dig_for_clues_in_ewing_gas_explosion.html